

NEROLAC PERMA NO HEAT

HEAT-REFLECTING LIQUID APPLIED WATERPROOF
COATING FOR ROOFS AND EXTERIORS



DESCRIPTION

NoHeat is a heat-reflecting liquid-applied waterproof coating based on acrylic copolymer emulsion. It reflects visible radiation and infrared rays, thereby reducing the surface temperature up to 15°C.

USES

- Terrace, roof, parapet walls, chhajja, GI sheet, cement panel shades, and other horizontal surfaces.
- Can be used as a waterproofing base coat for vertical walls.

PRODUCT FEATURES

- 1) Resistant to UV exposure
- 2) 150 surface temperature reduction
- 3) 3 years waterproofing warranty
- 4) Vapor permeable
- 5) Strong adhesion to masonry surfaces
- 6) Excellent dirt pick-up resistance
- 7) Easy to apply

PRODUCT INFORMATION

Chemical base	Modified acrylic copolymer dispersion	
Packaging	1L, 4L & 20L	
Shelf life	60 months from the date of manufacturing	
Storage conditions	The Product must be stored in its original, unopened, and undamaged sealed packaging in a dry condition at a temperature between +5°C and 30°C.	
Appearance	White colour viscous liquid	
Density	1.30 ± 0.05 Kg/L	(ASTM D1475)
Solids	50 ± 0.5%	

APPLICATION INFORMATION

Coverage & waiting time	Primer-5-6 m ² /L (Self-priming at 30% dilution with water)	
	Horizontal-1.85 m ² /L/2 coats (without any dilution)	
	Vertical-3.25 m ² /L/coat (without any dilution)	
	Note-Waiting time is 4-6 hours between each coat. It can vary depending on temperature and relative humidity.	
Ambient air temperature	+5 °C - +40 °C	
Substrate temperature	+5 °C - +40 °C	
Relative air humidity	80% max	

Dew point	Beware of condensation. The substrate and uncured applied roof material must be at least +3°C above the dew point to reduce the risk of condensation on the surface finish.	
Substrate moisture content	≤6% (Stanley moisture meter)	
Applied product ready for use	Light traffic	24 hours
Note- Applied Noheat must not be subjected to ponding before 7 days. Contact the Kansai Nerolac Paints team for more information.		

TECHNICAL INFORMATION

PROPERTIES	SPECIFICATION	RESULTS
Tensile strength, N/mm ²	ASTM D 2370	≥4
Elongation, %	ASTM D 2370	≥100
Crack bridging ability, mm	ASTM C 1305	≥1
Pull off adhesion, N/mm ²	ASTM D 7234	≥1.5
Depth of penetration of water under pressure at 5 Bar	EN 12390-8	Passes
Tear resistance, N/mm	ASTM D 624	≥20
Solar reflective index	ASTM E1980	106
Water vapor permeance,	ASTM D 1653	≥40
Water absorption, %	ASTM D 471	≥3

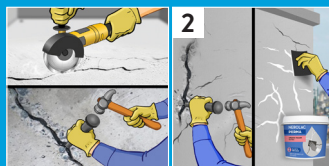
*Values determined at the laboratory conditions: 23 °C ± 2 °C, R.H. 50 % ± 5 %, results may vary based on site conditions, contact the Kansai Nerolac Paints team for assistance.

APPLICATION PROCESS

SUBSTRATE PREPARATION



New concrete substrate should be 28 days old.



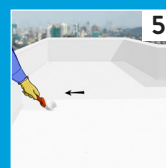
Prepare the surface by cleaning it with a high-pressure water jet/wire brush and ensure that it is free from dust, oil, grease, and loose particles.



Check the substrate for its soundness, all the damaged and hollow portions should be repaired using polymer-modified repair mortar.



Cracks up to 10 mm should be filled by **Nerolac Perma Crack Filler**, cracks more than 10 mm should be filled with polymer-modified mortar.

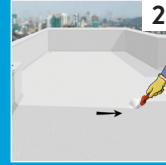


On the roof with china mosaics or ceramic tiles **Nerolac Perma Terrace Tile Primer** should be used as a primer before application of NoHeat.

HORIZONTAL AREAS



1 Apply a self-priming coat of NoHeat by diluting 30% with water at a recommended coverage.

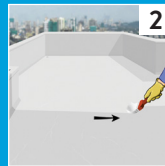


2 Apply two coats of NoHeat without dilution with the help of a brush or roller at a recommended coverage.

VERTICAL AREAS



1 Apply a self-priming coat of NoHeat by diluting 30% with water at a recommended coverage.



2 Apply two coats of NoHeat without dilution with the help of a brush or roller at a recommended coverage.



3 Apply topcoat with any exterior emulsion paint.

PRECAUTIONS

- For best performance on terraces, ensure that the product is applied on the entire roof including the parapet walls (till the other side of the parapet wall beyond the roof joint).
- Do not over-dilute the product.
- Adhere to forced coverage to avail the warranty.
- Avoid excessive surface abuse which could lead to puncturing of the film.
- Do not apply during rains and extreme temperatures.
- If applied on porous substrates during rising temperatures pinholes may occur from rising air. Apply during falling temperatures.

CLEANING OF THE TOOLS

- Clean all tools and equipment with water immediately after use. Hardened/cured material can only be removed mechanically.

EHS INFORMATION

- Avoid inhalation, eyes, and skin contact. In case of contact wash with water and seek medical attention.
- Refer to MSDS for safety measures and precautions while handling the product.

DISCLAIMER:

The product information and application details given by the company have been provided in good faith and are meant to serve only as a general guideline during usage. The performance claims made are based on the tests carried out under controlled conditions and our experience with the type of products, therefore actual performance will depend on local factors prevailing at that point in time. Users are advised to carry out sample tests by taking trials to ensure the suitability of products for their requirements, before full-scale usage of our products. The Company is not liable for factors beyond its control such as application during adverse climatic conditions, use of improper application tools/techniques and surface preparation, any structural defects, or the inferior quality of materials other than paints. The warranty/guarantee clauses shall accordingly be amended.