

## HIGH-STRENGTH FIBRE-REINFORCED PU ACRYLIC ELASTOMERIC WATERPROOF COATING

### Description

**NoDamp+** is a high-strength fibre-reinforced liquid applied elastomeric waterproofing membrane. It is formulated with PU acrylic hybrid polymers and reinforcing fibres. It forms a thick, seamless, durable membrane upon curing, which offers ultimate waterproofing.

### Uses

- Flat and sloped exposed roofs
- Waterproofing of old tiled roofs
- Waterproofing of external walls
- Chajjas and parapet walls

### Substrates

- Concrete and cementitious substrates
- Brick, Masonry, or renders
- Unglazed ceramic tile and china mosaics
- Asbestos or lime terrace roofs
- Metal roof sheets and industrial roofs

### Product Benefits



15 years waterproofing warranty\*



15 °C surface temperature reduction



Strong adhesion to concrete, masonry, tiles, asbestos, metal sheets, etc



Excellent dirt pick-up resistance



Excellent weather resistance



Water vapor permeable



Low VOC



Excellent resistance to algae and fungus

**Important** - \*Check warranty document for complete details.

### Product Information

<b>Chemical base</b>	PU acrylic copolymer, reinforcing fibres, and additives
<b>Packaging</b>	4L & 20L
<b>Shelf life</b>	60 months from the date of manufacturing
<b>Storage conditions</b>	The Product must be stored in its original, unopened, and undamaged sealed packaging in a dry condition at a temperature between +5 °C and 30 °C.
<b>Appearance</b>	White colour viscous liquid
<b>Density</b>	1.20 ± 0.05 Kg/L
<b>Solids</b>	50 ± 0.5%



## Application Information

Coverage & waiting time	<b>Primer</b> – 4 – 5 m <sup>2</sup> /L (Self-priming at 30% dilution with water)	
	<b>Horizontal</b> – 1 m <sup>2</sup> /L/2 Coat (Without any dilution)	
	<b>Vertical</b> – 2.5-2.7 m <sup>2</sup> /L/Coat (Without any dilution)	
	<b>Important</b> – Exterior painting is a must on the vertically applied coat.	
<b>Note</b> —Waiting time is 4-6 hours between each coat. It can vary depending on temperature and relative humidity.		
Ambient air temperature	+10 °C - +45 °C	
Substrate temperature	+10 °C - +45 °C	
Relative air humidity	80% max	
Dew point	Beware of condensation. The substrate and uncured applied roof material must be at least +30 °C above the dew point to reduce the risk of condensation on the surface finish.	
Substrate moisture content	≤6% (Stanley moisture meter)	
Applied product ready for use	Light traffic	24 hours
<b>Note</b> - Applied NoDamp+ must not be subjected to ponding for 7 days. Contact the Kansai Nerolac Paints team for more information.		

## Application Process

### Substrate Preparation

#### Cementitious substrates

- New concrete substrate should be 28 days old and have tensile strength >1.5 N/mm<sup>2</sup>.
- Prepare the surface by cleaning it with a high-pressure water jet/wire brush and ensure that it is free from dust, oil, grease, and loose particles.
- Check the substrate for its soundness; all the damaged and hollow portions should be repaired using polymer-modified repair mortar.
- Cracks up to 10 mm should be filled by **Nerolac Perma Crack Filler**; cracks more than 10 mm should be filled with **polymer-modified mortar**.
- On the roof with china mosaics or ceramic tiles, **Nerolac Perma Terrace Tile Primer** should be used as a primer before application of NoDamp+.

#### Bricks and stones

- Mortar joints must be sound and preferably flush-pointed.
- Use reinforcement over joints.

### Ceramic roof tiles & china mosaics

- Ensure all tiles are securely fixed.
- Replace any broken, loose, or missing sections.
- Remove the glaze and slippery surface by grinding.
- Power wash the surface.

### Metals

- Metals must be in sound surface condition.
- Abrade exposed surfaces to a bright metal finish.
- Use reinforcements over joints and fixings.
- Use an epoxy primer to ensure proper adhesion and to protect the metal from corrosion.

### Existing Paint and coatings

- Paint must be sound and firmly adhered to the substrate.
- Remove loosely adhered material.
- To confirm compatibility, carry out a small trial before completing the application.

## Mixing



For primer coat (self priming):  
Dilute Nerolac Perma NoDamp+  
with 30% water



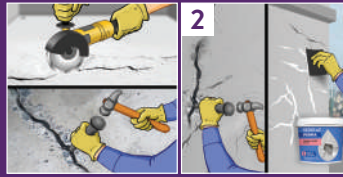
For waterproof coating: Direct  
application, no mixing required

## Application Method

### 1. Surface Preparation



Surface to be treated must be thoroughly cleaned and all loose material must be removed.



Small cracks up to 10mm or less should be opened, cleaned & filled with Nerolac Perma Crack filler.



Bigger cracks, damaged portions & hollow areas must be repaired with Nerolac Perma Waterproof Polymer/Nerolac Perma Waterproof Latex modified mortar.



Miscellaneous surfaces like tiles, china mosaics, smooth and glossy cementitious surface, product should be used with Nerolac Perma Terrace Tile primer.

### 2. Applications Method

#### a) Horizontal Areas

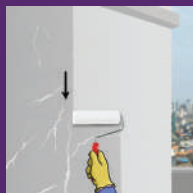


Apply a self-priming coat of NoDamp+ by diluting 30% with water at a recommended coverage.



Apply two coats of NoDamp+ without dilution with the help of a brush or roller at a recommended coverage.

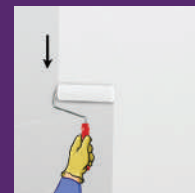
#### b) Vertical Areas



Apply a self-priming coat of NoDamp+ by diluting 30% with water at a recommended coverage.



Apply one coat of NoDamp+ without dilution with the help of a brush or roller at a recommended coverage.



Apply topcoat with any exterior emulsion paint.

## Technical Information

Properties	Test Methods	RESULTS
Tensile strength, N/mm <sup>2</sup>	ASTM D 2370-2016	≥1.5
Elongation at break, %	ASTM D 2370-2016	≥500
Crack bridging ability, mm	ASTM C 1305	≥4
Pull off adhesion, N/mm <sup>2</sup>	ASTM D 7234-2022	≥1.5
Depth of penetration of water under pressure @10 Bar	EN 12390-8-2019	Passes
Tear resistance, N/mm	ASTM D 624-2000	≥10
Water vapour permeance, g/m <sup>2</sup> -24h	ASTM E 96-2022	≥20
Water absorption, %	ASTM D 471	<20
Solar reflectance index	ASTM E1980	110
Shore-A hardness	ASTM D 2744-2015	≥68
Chloride ion diffusion resistance	ASTM C1202	Very low
Microbial resistance	ASTM D5590	No growth
Behaviour after artificial weathering, 500 hours	ASTM D4587	No crack, no blisters, no change in gloss

\*Values determined at the laboratory conditions: 23 °C ± 2 °C, R.H. 50 % ± 5 %, results may vary based on site conditions, contact the Kansai Nerolac Paints team for assistance.

## Precautions

- For best performance on terraces, ensure that the product is applied on the entire roof, including the parapet walls (till the other side of the parapet wall beyond the roof joint).
- Do not over-dilute the product.
- Adhere to the forced coverage to avail the warranty.
- Avoid excessive surface abuse, which could lead to puncturing of the film.
- Do not apply during rain and extreme temperatures.
- If applied on porous substrates during rising temperatures, pinholes may occur from rising air. Apply during falling temperatures.

## Cleaning Of The Tools

- Clean all tools and equipment with water immediately after use. Hardened/cured material can only be removed mechanically.

## EHS Information

Avoid inhalation, eyes, and skin contact. In case of contact, wash with water and seek medical attention.

Refer to the MSDS for safety measures and precautions while handling the product.

### DISCLAIMER

The product information and application details given by the company have been provided in good faith and are meant to serve only as a general guideline during usage. The performance claims made are based on the tests carried out under controlled conditions and our experience with the type of products, therefore, actual performance will depend on local factors prevailing at that point in time. Users are advised to carry out sample tests by taking trials to ensure the suitability of our products for their requirements, before full-scale usage of our products. The Company is not liable for factors beyond its control, such as application during adverse climatic conditions, use of improper application tools/techniques and surface preparation, any structural defects, or the inferior quality of materials other than paints. The warranty/guarantee clauses shall accordingly be amended.