



NEROLAC



20X
RAIN PROTECTION*

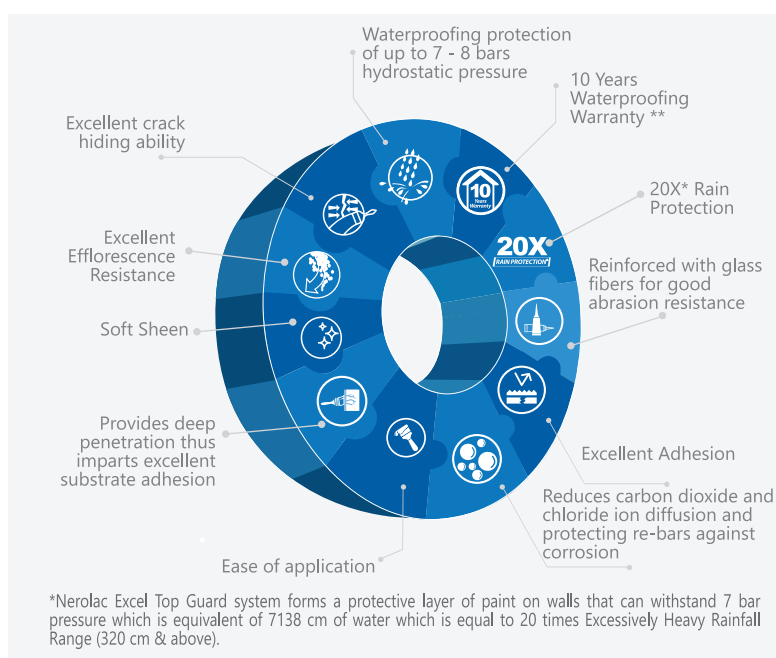


EXCEL TOP GUARD WATERPROOF ACRYLIC BASECOAT

PRODUCT DESCRIPTION

Nerolac Excel Top Guard is flexible acrylic exterior painting system. It comprises of Nerolac Excel Top Guard Topcoat & Nerolac Excel Top guard Waterproof Basecoat. Nerolac Excel Top Guard Waterproof Basecoat's water based fiber reinforced Emulsion applied water proofing membrane. It forms a thick, seamless, durable membrane thus offering ultimate waterproofing primer. It is formulated to ensure deep penetration and sealing of porous surfaces. It is recommended for use as primer over exterior building walls before application of Excel Top Guard Topcoat.

PERFORMANCE FEATURES & BENEFITS



SURFACE PREPARATION

- 1 All new cement-sand renderings or concrete surfaces should be allowed to age for 6 to 8 weeks before surface coating.
- 2 Surface for treatment should be clean, dry and free from all loose or poorly adhering material. Dirt, grease, wax etc.
- 3 Clean the surface with stiff wire brushing followed by high pressure water jet cleaning if required.
- 4 All structural cracks must be opened in V shape and cracks up to 5mm to be filled with Nerolac Waterproof X Crack Filler. Cracks more than 5mm to be filled with polymer modified mortar made with Nerolac Waterproof X Concrete Mix.

**10 years warranty on performance, waterproofing & film integrity only when Excel Top Guard Topcoat & waterproof Basecoat applied together

AREAS OF APPLICATION

Surfaces: Priming of plastered walls (fresh & old) asbestos sheets, brick, concrete surface etc.
Areas: Heavy rainfall areas, industrial areas, sea-coastal areas, extreme temperature conditions (0 degree C to 50 degree C).

TOPCOAT APPLICATION

Apply 2-3 coats of Nerolac Excel Topguard Topcoat as per the instructions given in the Nerolac Excel Topguard Topcoat PDS.

PRECAUTIONS & LIMITATIONS

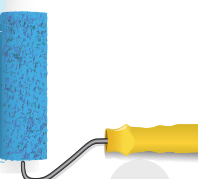
- Only upto 30% dilution with water is recommended
- Excess water on substrate must be removed by suitable means
- Do not apply during rains or in direct sunlight
- Do not tint the base primer coat

APPLICATION

- 1 **a. Fresh Surfaces:** Apply a self-priming coat of Nerolac Excel Top Guard Waterproof Basecoat (dilute 1 ltr of Basecoat with 300ml of water) and apply at forced spreading rate of 4.64-5.11 sq.m./ltr Allow to dry for 4-6 hrs and then apply another coat of of Nerolac Excel Top Guard Waterproof Basecoat without dilution with a spreading rate of 3.73-4.18 sq.m./ltr. **b. Repainting:** On surfaces previously painted with premium quality exterior emulsions like Excel Anti Peel or Excel Mica Marble or Excel Total, apply one coat of Nerolac Excel Top Guard Waterproof Basecoat without dilution at a spreading rate of 2.78-3.25 sq.m./ltr. and allow to dry for 4-6 hrs.
Dark shades may require additional coat for hiding.

- 2 For horizontal surfaces and Parapet tops application of 3 coats is recommended for better protection.

- 3 For best results coating cycle should be completed within 48 hrs. There should not be direct exposure of rain within 3-4 hrs hours of application on the painted surface.



TECHNICAL DATA



COLOUR
White



DRYING TIME
Surface dry time 30 minutes



**DENSITY/SPECIFIC GRAVITY
@ 30 DEG C**
1.25 +/- 0.05



BONDING STRENGTH
Excellent to porous substrate



ELONGATION AT BREAK
ASTM D 412
> 190



TENSILE STRENGTH N/MM2
ASTM D 412
> 2



EFFLORESCENCE RESISTANCE
Good



WEATHERING RESISTANCE
Excellent



SOLID CONTENT %
> 50.00%

SHELF LIFE & STORAGE

- Shelf life is 24 months from the date of manufacturing in unopened condition
- Store in a cool & dry place
- Keep away from direct sunlight
- Thinned paint to be consumed within 24 hrs after thinning

HEALTH & SAFETY PRECAUTIONS

- Avoid inhalation, eye and skin contact. In case of contact, wash with water and seek medical attention
- Do not pour the leftovers in the drain. Dispose off after natural drying

COVERAGE

Fresh Surfaces :

Self-priming coat: 4.64-5.11 sq.m./ltr. (At 30% dilution by volume with water.)

Second Coat: 3.73-4.18 sq.m./ltr. without dilution.

REPAINTING

Repainting of 2.78-3.25 sq.m./ltr. without dilution.

Coverage will vary depending upon the nature and texture of the substrate, type of application tool used.

PACKAGING

1 ltr., 4 ltrs., 10 ltrs & 20 ltrs.