



SELECT

A niche for premium spaces



INTRODUCING



SELECT

A niche for premium spaces

Nerolac, a subsidiary of Kansai Paint, is proud to introduce the Kansai Select range – a meticulously curated range of luxurious international textures infused with rare materials, designed to elevate your space with a personal touch. Kansai Paint, a Japanese, Osaka-based paint and coatings company founded in 1918, is globally renowned for pioneering paint and coating technologies. One of the world's top paint manufacturers with global presence in over 46 countries. Kansai Paint is the perfect fusion of opulence and cutting-edge Japanese technology, making it the ultimate choice for your space.



Positano

Positano reproduces beauty in a matt version and captures the essence of the Mediterranean Sea, mimicking the gentle waves and vibrant colours of the Mediterranean waters. Thus, bouncing an enchanting look and transforming your space into a picturesque landscape.



Matt Effect



Lead-Free



Very Low VOC



ポジターノ



Roller



Plastic Trowel



Scraper

Positano



■ Whispering Mist
PO11003



■ Burlywood
PO613



■ Twilight Ash
PO40015



■ Alabaster Stone
PO802



■ Cloudy Grey
PO11301



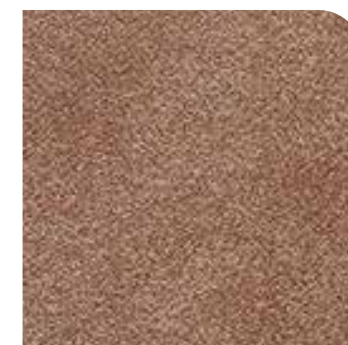
■ Salmon Pink
PO3214



■ Salmon
PO407



■ Taupe
PO24304



■ Sepia
PO24505



■ Link Blue
PO1209



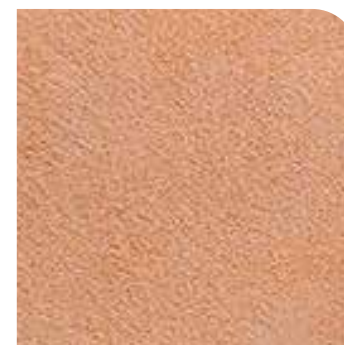
■ Light Plum
PO2411



■ Pale Turquoise
PO3310



■ Orchid Flower
PO41312



■ Crepe
PO3508



■ Koala Inspired
PO39006



Bluhm

Bluhm combines sandblasted effects with a myriad of shades to bring the coastal paradise right to your home. Featuring a metallic finish reminiscent of the Mediterranean shores, it creates a warm and inviting ambience in any room.



Metallic
Sandblasted
Effect



Lead-Free



Very Low VOC



ブルーム



Roller



Brush

Bluhm



 **Seashell**
BL658



 **Harvest Gold**
BL41868



 **Soft Pink**
BL160




 **Magenta Haze**
BL24162



 **Vanilla Ice**
BL3555



 **Flamingo**
BL3161



 **Peach Puff**
BL10466




 **Pearl Essence**
BL567




 **Shadowed Pearl**
BL24352




 **Antique Brass**
BL24553

Bluhm




 **Pweter Mist**
BL11351




 **Palisade Orchid**
BL24465



 **Dusky Leaf Moon**
BL1563



 **Powder Ash**
BL970



 **African Parrot**
BL39054



 **Beau Blue**
BL1256



 **Bdazzled Blue**
BL40564




 **Myrtle Green**
BL41069



 **Pearl Rice**
BL759



 **Plum Dandy**
BL41357



Arabesque

Discover the elegance of Arabesque, a decorative paint with precious metallic reflections that add a touch of luxury to any space. It is formulated with micro-particles that give magical light and dark contrast effects, a velvety feel, and silky reflections.



Metallic
Velvety Effect



Lead-Free



Very Low VOC



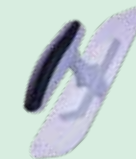
アラベスク



Roller



Brush



Plastic Trowel



Scraper

Arabesque



■ Drizzled Veil
AR11331



■ Restrained Gold
AR545



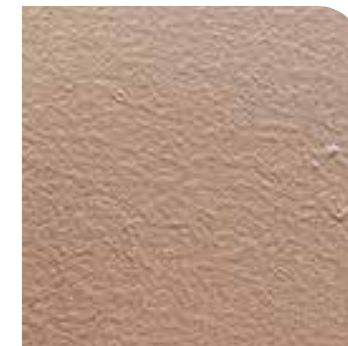
■ Coral Reef
AR433



■ Georgia Peach
AR3534



■ Sand Dollar
AR637



■ Peach White
AR3238



■ Pearl Mist
AR12839



■ Rookwood Antique
AR1944



■ Biscuit Powder
AR740



■ Fairy Tale
AR2448

Arabesque



■ Butternut Leaf
AR10647



■ Ethereal Slate
AR3641



■ Moonlit Shadow
AR1146



■ Regatta Blue
AR40543



■ Winter Cloud
AR3336



■ Misty Grey
AR1235



■ Peachbloom
AR24142



■ Mauve Blush
AR42750



■ Veronica
AR41349



■ Interface Tan
AR24532



Nylum

Transform your walls into a piece of ancient art with Nylum, a paint that reproduces the intricate patterns of antique stone, adding a sense of history and sophistication to your interiors. Its natural warm colours with a shaded effect can be traced back to large mineral masses found in nature.



Matt Stone
Effect



Lead-Free



Very Low VOC



ナイラム



Roller



Plastic Trowel



Scraper

Nylum



BC: Iridium - TBC001
TC: Bottochino Firoto - NY3517



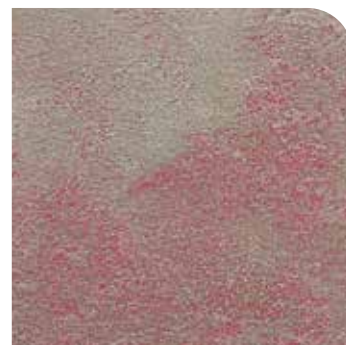
BC: Iridium - TBC001
TC: Cassiopeia Marble - NY416



BC: Citrine - TBC002
TC: Bottochino Firoto - NY3517



BC: Venetian Red - TBC005
TC: Silver Sage - NY3620



BC: Cherry Blossom - TBC006
TC: Silver Sage - NY3620



BC: Iridium - TBC001
TC: Mushroom Sand - NY2525



BC: Iridium - TBC001
TC: Rustic Nectarine - NY3121



BC: Iridium - TBC001
TC: Ashen Mist - NY3219



BC: Iridium - TBC001
TC: Silver Sage - NY3620



BC: Cerulean Crayola - TBC003
TC: Mushroom Sand - NY2525



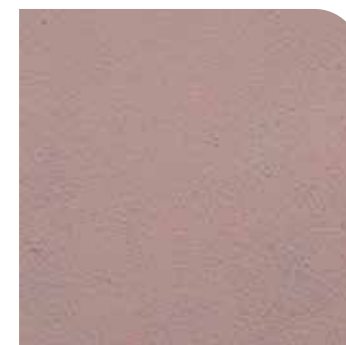
BC: Iridium - TBC001
TC: Periwinkle - NY2418



BC: Mountain Meadow - TBC004
TC: Silver Sage - NY3620



BC: Cerulean Crayola - TBC003
TC: Silver Sage - NY3620



BC: Iridium - TBC001
TC: Smoky Whisper - NY2728



BC: Mountain Meadow - TBC004
TC: Rustic Nectarine - NY3121



Tracce

Experience the natural beauty of Tracce, a lime-based paint that creates a unique textured effect, bringing a natural and rustic charm to your walls. This distinctive texture adds depth to the space and lifts its overall appeal.



Natural
Concrete Effect



Lead-Free



VOC Free



トラツチェ



Roller

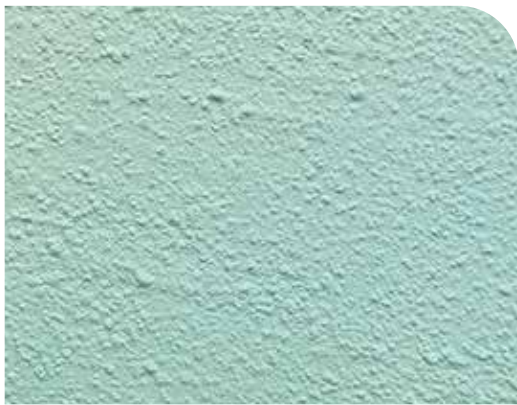


Trowel



Scraper

Tracce




 **Garden Touch**
TR17276



 **Timberwolf**
TR39073



 **Old Lace**
TR675



 **Rossa Corsa**
TR24078



 **Isabelline**
TR11071



 **Swamp Green**
TR18377



 **Linen Shadow**
TR24572



 **Blanched Almond**
TR474



Shikisai

Inspired by the natural stones found in nature, Shikisai brings a matt finish with multi-coloured patterns to your walls. Shikisai seamlessly amalgamates elegance and luxury in a calm finish which amps up your space.



**Matt Stone Finish
With Multi-Coloured
Patterns**



Lead-Free



Low VOC



シキサイ



Roller



Spray Gun

Shikisai



BC: Moon & Stars - 2954
TC: AZE - 301



BC: Night Moves - 2958
TC: AZE - 306



BC: Espresso - 2847 C
TC: AZE - 307



BC: Saratoga Sand - 2829
TC: AZE - 310



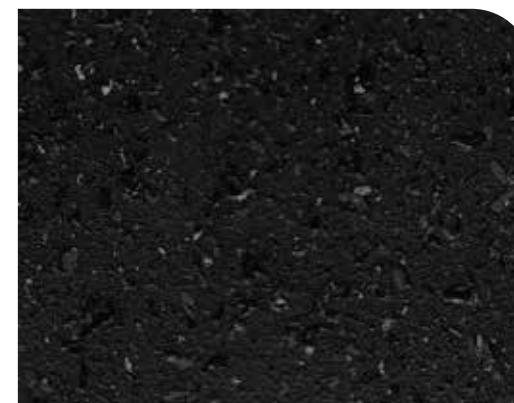
BC: Sea Fog - 2674 P
TC: AZE - 313



BC: Finch - 2739
TC: AZE - 318



BC: Mocassin Beige - 2781
TC: AZE - 319



BC: Path less Travelled - 5019
TC: AZE - 330



KANSAI NEROLAC PAINTS LIMITED

A SUBSIDIARY OF KANSAI PAINT CO. LTD. JAPAN

28TH FLOOR, A WING, MARATHON FUTUREX, N.M. JOSHI MARG, LOWER PAREL, MUMBAI, MAHARASHTRA, 400013.

email: www.nerolac.com.  18002665566 | Follow us on:    